

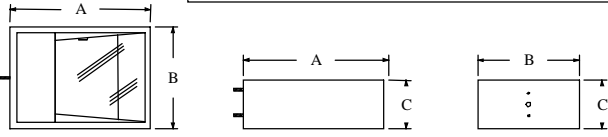


GLARE & LIGHT POLLUTION CONTROLLED  
**SPORTS LIGHTING**  
**LUMINAIRES**

Project:  
 Location:  
 Contractor:  
 Distributor:

**DIMENSIONS**

	A	B	C
S-FT-1000 HPS or MH	29"	21"	10"
SEC-III-250HPS or 400HPS	25"	18-3/8"	8"



**ORDERING INFORMATION** - Verify information and option below.

Luminaire Prefix	Distribution	Lamp Wattage	Light Source	Lens	Line Voltage**	Luminaire Finish	Options
<b>Soft Sports Lighter S-(Assembly Style)</b>	FT - Forward Throw*	1000	HPS - High Pressure Sodium MH Metal Halide	F-Clear Flat Tempered Glass	347V <b>480V</b>	PLT - Platinum BRZ - Bronze BLK - Black COA - Cocoa BUF - Buff WHT - White GRN - Green	CL - Coated Lamp LL - Less Lamp FS120V - Single Fusing FS277V - Single Fusing FS347V - Single Fusing FD208V - Double Fusing FD240V - Double Fusing FD480V - Double Fusing <b>NO - No Options</b>
<b>Security Light SEC</b>	3 - Type III	250 400	HPS - High Pressure Sodium MH - Metal Halide		MT - Multi Tap <sup>o</sup>		

CATALOG NUMBERS: **SFT-FT-1000MH-F-480-BLK** and **SFT-FT-1000HPS-F-480- BLK** and **CTM-3-400MH (HPS)-F-480- BLK**

**NOTE: See Submittal Drawing for Pole and Bracket Arm and Assembly Styles.**

\* FT -Forward Throw reflectors are field rotatable. 1000 Watt Luminaires weigh 63 lbs or less. 250 Watt Luminaires weigh 36 lbs or less.  
 \*\* For International voltages, consult factory. 1000 Watt Luminaires have an EPA of 3.2 or less. 250 Watt Luminaires have an EPA of 2.2 or less.  
 ° MT - Multi Tap (120, 208, 240 & 277 Volt) is shipped standard unless otherwise specified. Order 347 volt and **480 volt** as single item.  
 BRZ = Bronze; **BLK = Black**; PLP – Platinum Plus; GRN = Tennis Court Green. Contact factory for additional colors.

**POLE ASSEMBLY STYLES** see lighting layout for style(s) utilized [See pole details cut sheets for concrete and steel poles or wood brackets for wood poles]

FOUR LIGHT		SIX LIGHT		EIGHT LIGHT	
<b>S2-2B</b>		<b>S-6L</b>		<b>S-8L</b>	
		<b>S-6R</b>		<b>S-8R</b>	
<b>S3-2</b>		<b>S-6B</b>		<b>S-8B</b>	
	<b>SIDE</b>		<b>SIDE</b>		<b>SIDE</b>



2224 – 137<sup>th</sup> Place S.E.  
 Bellevue, Washington 98005-4032  
 Phone: 425.679.6550  
 Email: [softlite@softlite.com](mailto:softlite@softlite.com)  
 Web: [www.softlite.com/](http://www.softlite.com/)

**GLARE & LIGHT POLLUTION  
 CONTROLLED  
 SPORTS LIGHTING LUMINAIRES**

**PHOTOMETRICS**

<p><b>SLS-FT</b>  <b>FORWARD THROW</b>  <b>1000 WATT METAL HALIDE</b></p>	<p><b>SLS-FT</b>  <b>FORWARD THROW</b>  <b>1000 WATT HIGH PRESSURE SODIUM</b></p>	<p><b>SEC - SECURITY</b>  <b>TYPE III DISTRIBUTION</b>  <b>250 WATT HIGH PRESSURE SODIUM</b></p>

**SOFT™ SERIES**

When you purchase a Soft™ Lighting Systems product you purchase a sports lighting system that has superior lighting and glare control with contemporary styling. Down to Earth Lighting optics place the light on the playing field not the surrounding community. Soft™ directional cutoff fixtures eliminate the “Glow Dome” effect experienced with traditional round sports lighting fixtures. The mixture of metal halide and high pressure sodium lamp sources provides a warm comfortable white light giving you a dramatic color enhancement on the field.

*Soft™ fixtures are manufactured with specification grade materials and Made in the USA.*

**SPECIFICATIONS**

**HOUSING**

Soft™ housing’s are one-piece aluminum construction. Corners are welded and finished to produce a clean, sharp, contemporary appearance; while increasing housing strength and ensuring weather-tight construction. Each fixture is UL Listed and CSA certified for wet locations.

**LENS/GASKET**

Soft™’s clear flat tempered glass lens is sealed to the lens frame with silicone sealant. The lens frame features a continuous one-piece EPDM gasket for maximum sealing to the housing.

**DOOR FASTNERS**

Soft™ features an extruded aluminum door frame. Soft™ features two captive door fasteners to provide secure closure and easy access with no loose hardware.

**SOCKETS**

Porcelain mogul-base sockets feature spring-reinforced contacts for long life.

**LIGHT SOURCES**

Soft™ is designed to operate with any of the following lamp types: High Pressure Sodium or Metal Halide with mogul base sockets.

**REFLECTORS & DISTRIBUTION PATTERNS**

SFT-FT Forward Throw reflectors are utilized for all sports playing field areas and designed to eliminate stray light and produce sharp backside cutoff. A field rotatable reflector provides flexibility in distribution patterns without moving the fixture on all 1000 watt forward throw units.

SEC Security fixture reflectors are Type III distribution providing a control to areas outside the sports field.

All photometric data is certified by an independent testing facility.

**FINISHES**

Each Soft™ fixture is finished with a high performance and durable baked-on polyester-powder finish process for an attractive appearance. Standard finish colors available for Soft™ series fixtures are Platinum, Bronze, Black, Cocoa, Buff, White and Green. The polyester-powder finish with stands extreme weather changes without cracking or peeling. Finish is guaranteed for five full years.

**BALLAST**

High-power factor type ballast is mounted to the housing reinforcing plate. The ballast is designed for -20° F operation.

**ATTACHMENT STUDS**

Soft™ series fixtures have two ½” dia. stainless steel threaded studs attached to the housing for quick installations.

**BRACKETS**

Soft™ series brackets are produced from A36 steel tubing and finished with hot dipped galvanizing for long lasting durability.